



Bipolar Plasma System



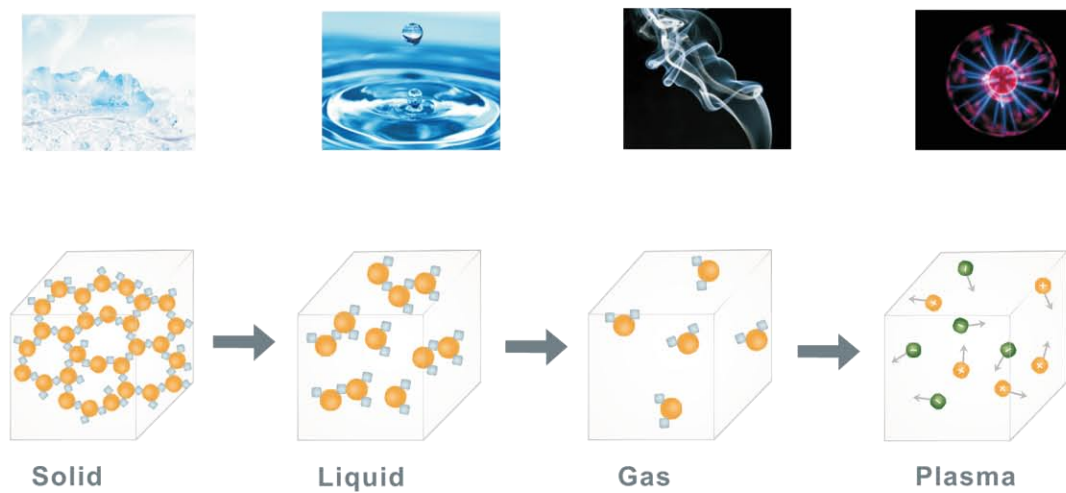
Always There
for Patients and Doctors



What is Plasma?

PLASMA is one of the four fundamental states of matter. Unlike the other three, solid, liquid and gas, PLASMA does not exist freely on the Earth's surface under normal conditions. It is created by applying energy to a gas. Molecules are ionized and this turns the gas into PLASMA.

PLASMA is a very good electrical conductor and it allows energy to cross at lower levels. This quality allows lower operating temperatures and, therefore, has less thermal spread.



Overview

Generator	Resectoscope	Electrode	Forcep	Others

Bipolar Plasma for BPH

SM10/20 Series

Features:

- True Bipolar Plasma System
- Saline as Working Medium
- Intelligent Circuit Breaker Protection
- Dual Mode Function

SM Mode: Resection and Coagulation in Urological and Gynecological Surgery

VP Mode: Coagulation in Laparoscopic Surgery







Technical Data (SM10 Series)

Type of Mode	Power Output	Maximum Voltage Output	Output Frequency
Bi-polar cutting mode	200 W at 150 Ω	340 Vrms	375 KHz
Bi-polar coagulation mode	100 W at 100Ω	120 Vrms	375 KHz
Bi-polar coagulation VP mode	100 W at 100Ω	120 Vrms	375 KHz

Technical Data (SM20 Series)

Type of Mode	Power Output	Maximum Voltage Output	Output Frequency
Bi-polar cutting mode	200 W at 150 Ω	340 Vrms	375 KHz
Bi-polar coagulation mode	110 W at 100Ω	130 Vrms	375 KHz
Bi-polar coagulation VP mode	95 W at 100Ω	130 Vrms	375 KHz

Resectoscope SM07/SMNKJ

Resectoscope	Direction of View	Others
Active	12°	Inner Sheath
		Outer Sheath
Passive	30°	Obturator
		Inner Sheath Inflow Device
		Tube Connector

Bipolar Plasma Electrode

Product Type	Product Model	Main Purpose	Width	Diameter	Working Length
Loop	SM1010/SM01-001A	Cutting/Coagulation	7.0	$\Phi 0.35 \pm 0.1$	279 ± 10
	SM1011/SM01-002A	Cutting/Coagulation	7.0	$\Phi 0.40 \pm 0.1$	279 ± 10
	SM1012/SM01-003A	Cutting/Coagulation	7.0	$\Phi 0.50 \pm 0.1$	279 ± 10
	SM1013	Cutting/Coagulation	5.0	$\Phi 0.30 \pm 0.1$	279 ± 10
	SM1014	Cutting/Coagulation	7.0	$\Phi 0.35 \pm 0.1$	279 ± 10
	SM1015	Cutting/Coagulation	6.0	$\Phi 0.50 \pm 0.1$	279 ± 10
	SM1016	Cutting/Coagulation	5.0	$\Phi 0.35 \pm 0.1$	279 ± 10
Shovel	SM1110/SM02-001A	Cutting/Coagulation	5.0	$\Phi 0.50 \pm 0.1$	279 ± 10
	SM1111	Cutting/Coagulation	6.0	$\Phi 0.50 \pm 0.1$	279 ± 10
Hook	SM1510/SM04-001A	Cutting/Coagulation	7.0	$\Phi 0.35 \pm 0.1$	279 ± 10
	SM1511/SM04-002A	Cutting/Coagulation	5.0	$\Phi 0.40 \pm 0.1$	279 ± 10
	SM1512	Cutting/Coagulation	5.0	$\Phi 0.60 \pm 0.1$	279 ± 10
Rod	SM1610/SM06-001A	Cutting/Coagulation	2.0	$\Phi 0.30 \pm 0.1$	279 ± 10
	SM1611/SM06-003A	Cutting/Coagulation	2.0	$\Phi 0.30 \pm 0.1$	330 ± 10
	SM1612/SM06-002A	Cutting/Coagulation	2.0	$\Phi 0.30 \pm 0.1$	570 ± 10
Needle	SM1710/SM05-001A	Cutting/Coagulation	2.0	$\Phi 0.60 \pm 0.1$	279 ± 10
	SM1711/SM05-002A	Cutting/Coagulation	2.0	$\Phi 0.60 \pm 0.1$	330 ± 10
	SM1712/SM05-003A	Cutting/Coagulation	2.0	$\Phi 0.60 \pm 0.1$	570 ± 10
Roller	SM1410/SM03-001A	Cutting/Coagulation	7.0	$\Phi 0.30 \pm 0.1$	279 ± 10



The Perfect Choice for Both Patients and Doctors



State of the Art Technology

True Bipolar Plasma System
Patented Design



Unparalleled Performance

Precise Cutting
Prompt Coagulation
Various Choice of Surgical Electrodes



Proven Choice

Economical
Durable



Efficient

Reduction of Operation Time



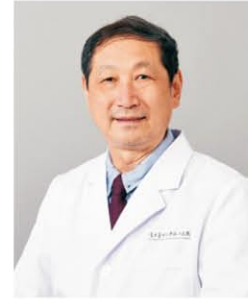
Reliability

No Post TUR Syndrome
Less Thermal Spread



What Surgeons Have Said about Us?

- Minimal Blood Loss
- Almost No Blood Transfusion Required
- No Post TUR Syndrome
- Shorter Hospital Stay
- Safer and Faster
- Better Postoperative Long Term Result in IPSS, QoL, Qmax and PVR



Prof. Chunxiao Liu

Asian Journal of Urology (2018) 5, 48–54
Available online at www.sciencedirect.com
ScienceDirect
journal homepage: www.elsevier.com/locate/ajur

Original Article

Bipolar transurethral enucleation and resection of the prostate: Whether it is ready to supersede TURP?

Peng Xu, Abai Xu, Binshen Chen, Shaobo Zheng, Yawen Xu, Hulin Li, Haiyan Shen, Chunxiao Liu*

Department of Urology, Zhujiang Hospital, Southern Medical University, Guangzhou, China

Received 2 September 2017; accepted 10 October 2017
Available online 8 December 2017

2.1. Surgical procedure

The procedure was performed using the Scanned Plasma-kinetic System (Scanmed, Zhuhai, China) with Plasma electrodes as well as a power of 160 W for the cutting and 80 W for coagulating. As described in our previous reports [7,8], the enucleation procedure usually started from the

Table 1 Perioperative data of the patients ($n = 52$) (mean \pm SD).

Characteristic	Value
Age, year	67.9 \pm 6.4
PV, mL	72.4 \pm 10.2
PSA, ng/mL	2.35 \pm 0.92
Operation time, min	43.1 \pm 4.0
Enucleation time, min	39.9 \pm 3.9
Enucleation weight, g	54.2 \pm 8.1
Tissue removal rate, %	74.7 \pm 2.6
Decrease in sodium, mmol/L	0.790 \pm 0.380
Postoperative irrigation, h	18.4 \pm 2.4
Duration of catheterization, h	40.0 \pm 6.1
Postoperative hospital stay, h	66.7 \pm 6.3

Bipolar Plasma for Laparoscopic Surgery

SM30 Series (Liuck)

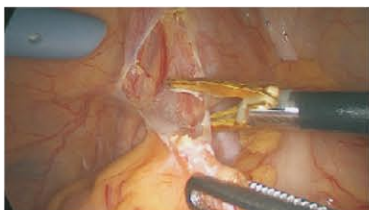
Features:

- Plasma Pulse Technology
- Liu's Scalpel Invented by Prof. Chunxiao Liu
- Fast Cutting, Reliable Coagulation and Clear Surgical Field
- Reduction of Operation Time
- Less Carbonization and Adhesion
- Versatile and Flexible
- Dual Mode Function :SM & VP Mode
- Real Time Conversion



Technical Data

Type of Mode	Power Output	Maximum Voltage Output	Output Frequency
Bi-polar cutting mode	140 W at 150 Ω	260 Vrms	375 KHz
Bi-polar coagulation mode	95 W at 100 Ω	130 Vrms.	375 KHz
Bi-polar coagulation VP mode	100 W at 100 Ω	130 Vrms	375 KHz

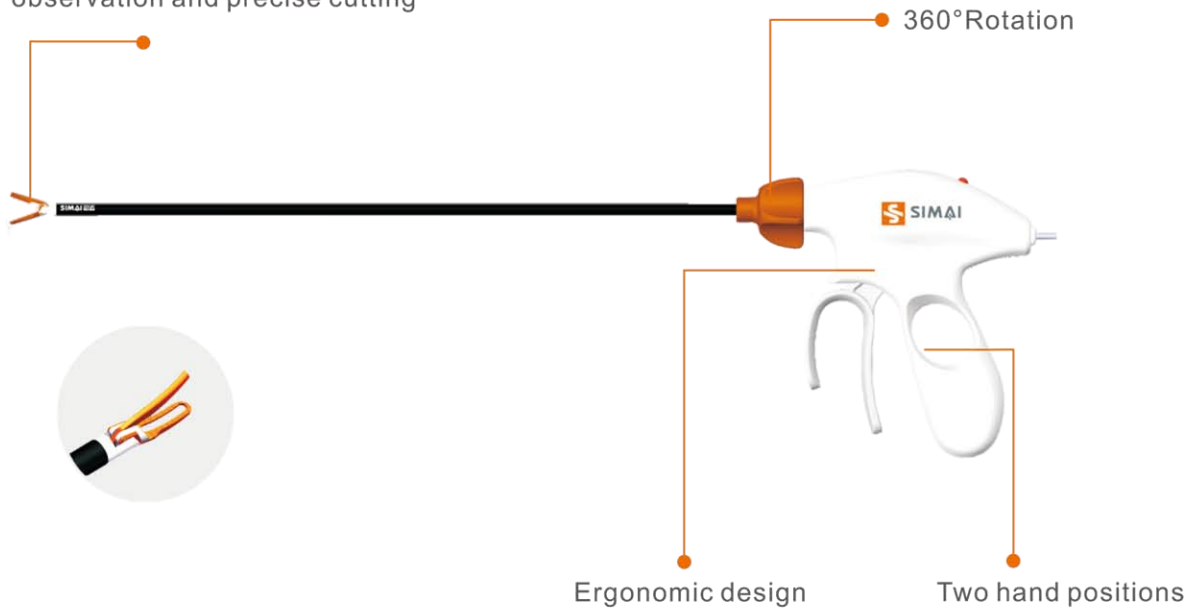


Liu's Scalpel

Multifunctional Instrument:

Attraction, Grasping, Dissecting, Coagulating, Vessel Sealing and Cutting

Arc design tips:
Better observation and precise cutting



Forcep Technical Data

Product Name	Product Model	Main Purpose	Width	Diameter	Working Length
Forcep	SM2200/SM07-001A	Cutting/Coagulation	5.5	$\Phi 0.50 \pm 0.1$	330 ± 10
	SM2201	Cutting/Coagulation	5.5	$\Phi 0.50 \pm 0.1$	180 ± 10
	SM2210/SM08-001A	Coagulation	5.5	$\Phi 0.50 \pm 0.1$	330 ± 10
	SM2211	Coagulation	5.5	$\Phi 0.50 \pm 0.1$	180 ± 10
	SM2220/SM08-001B	Coagulation	5.5	$\Phi 0.50 \pm 0.1$	330 ± 10
	SM2221	Coagulation	5.5	$\Phi 0.50 \pm 0.1$	180 ± 10
	SM2230/SM08-001C	Coagulation	5.5	$\Phi 0.50 \pm 0.1$	330 ± 10
	SM2231	Coagulation	5.5	$\Phi 0.50 \pm 0.1$	180 ± 10






Our Philosophy

✦ Foundation

Service
Integrity
Mutual Progress
Action
Innovation

✦ Strategy

We strive to be
Top Quality
First-class Product
Top Brand
First-class Company

✦ Essence

Determined and Progressive
Pursuit of Excellence
Constant Innovation

✦ Principle of Action

Be Self-Responsible
Never Stop Growing and Improving
Work Together, Win Together

Our Service

Passion
Prompt
Thoughtfulness
Effectiveness

Our Honor



International Sales Network



Our Mission and Future

Since our establishment in 2005, we have provided products and services to Asian countries like Malaysia, India, Myanmar, Cambodia, Vietnam, Philippines and Australia as well as other areas in Africa, Brazil, and Europe.

We see a growing need for technology based products and our mission is to continuously explore the feasibility of introducing a wider range of innovative products to better serve our customers globally.

We plan to use SIMAI as our company's name and brand name in 2019 globally. We are ready to expand our current activities to new and yet unexplored markets through strategic cooperation with excellent distributors and clients in those key markets.

SIMAI, Always There for You





SIMAI 司迈
MEDICAL EQUIPMENT



Simai Co., Ltd.
Formerly Known as *ScanMed(China) Ltd.*

Unit 7-A,7-B, No.4 Building,CECT High Technology Industrial Park,
No. 1, Technology Seven Road,High-tech Zone,
Tangjia,Zhuhai, Guangdong,China

Tel:86-756-3612518

Fax:86-756-3612519

Web:www.simaimedical.com